

Boutique Settings. Luxury Designs. Modern Amenities.

# COMMERCIAL LEASING OPPORTUNITIES



**CHASEN**  
COMPANIES



**32**  
BUILDINGS IN  
ITS PORTFOLIO

**500**  
**units**  
THROUGHOUT THE  
BALTIMORE & DC REGION

**RANKED**  
**No. 1**  
ON THE INC. 5000 SERIES:  
DC METRO LIST

Chasen Companies acquires, develops and manages luxury properties...

in the Greater Baltimore and DC markets. The firm specializes in multifamily, commercial and single-family properties. Each living and workspace is intentionally designed to provide a boutique setting, with moderate rents, commercial space, and outsourced amenities—all while maintaining the historic heritage of the property.

Chasen Companies has 32 buildings in its portfolio and manages more than 500 units throughout the Baltimore and DC region. Their boutique luxury model has resulted in exponential growth, landing Chasen Companies back-to-back No. 1 rankings on the Inc. 5000 Series: DC Metro list in 2020 and 2021.

contact

**DREW PEACE**

Chief Business Development Officer  
drew@chasencompanies.com | 443-447-0988

**REED MATSON**

Associate  
reed@chasencompanies.com | 443-676-3375

OFFICE/RETAIL SPACE

# 1122 North Calvert

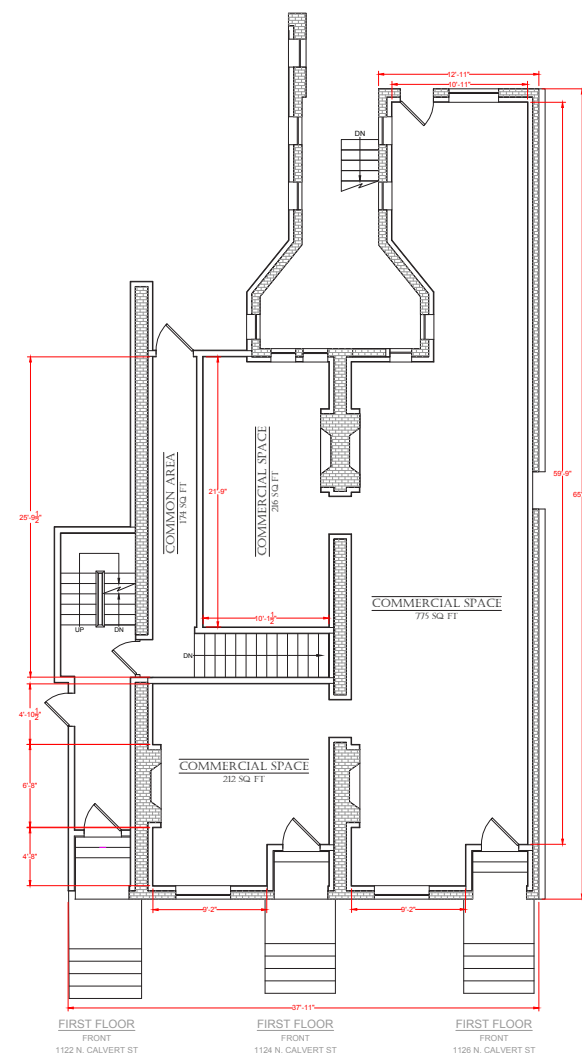
At 1122 N Calvert Street in Baltimore, The Calvert offers 1,203 SF of high-end, first-floor commercial space, ideal for professional office users.

Initially built in 1880, this property is full of historic character with natural lighting, large windows, and authentic details. It is now part of The Calvert, a brand new boutique building in Mount Vernon renovated in 2020 featuring 14 luxury apartments.

The Calvert is located in Mount Vernon, a premier neighborhood within Midtown Baltimore, in the heart of the city. This bustling arts area is bolstered by the University of Baltimore and the Maryland Institute College of Art.

Because of its walkability, tenants can easily access the plentiful bars and restaurants from this commercial space. The property is directly across from the Ivy Hotel and adjacent to Amtrak's Penn Station, and within walking distance to multiple MTA stations.

floorplan



1,203 sf  
FIRST FLOOR COMMERCIAL SPACE  
IN HISTORIC MOUNT VERNON



1122 North Calvert



14  
LUXURY APARTMENTS  
IN THIS BOUTIQUE  
BUILDING

LOCATED  
CLOSE TO PENN STATION,  
MTA STOPS, IVY INN,  
RESTAURANTS, BARS, AND  
SO MUCH MORE!

OFFICE SPACE

# 1511 Eastern Ave

1511 Eastern Avenue is a stylish open-plan office space in Baltimore, Maryland.

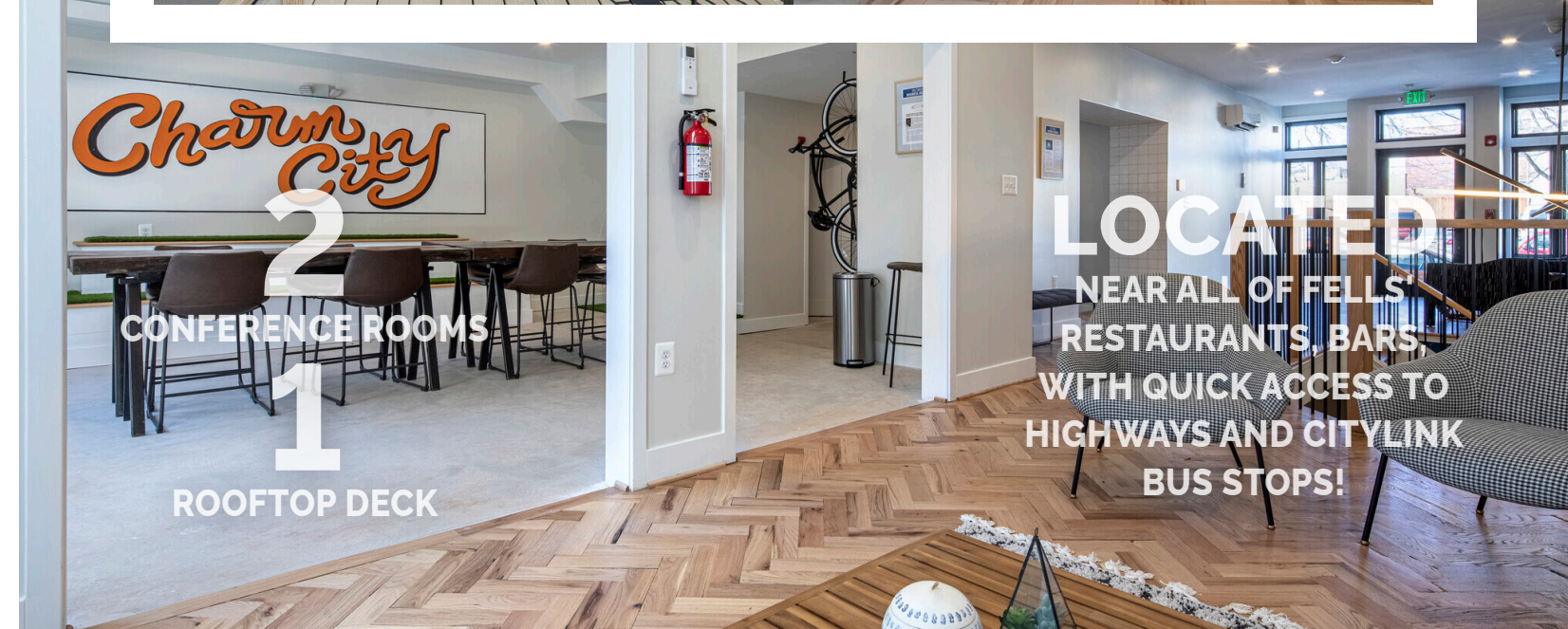
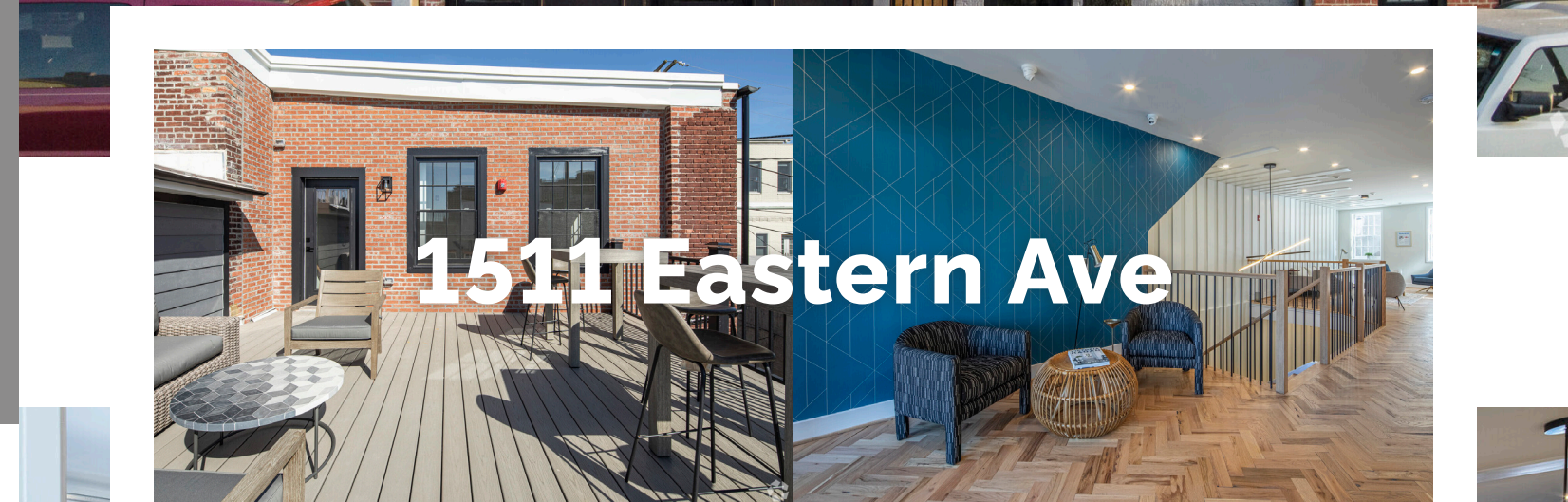
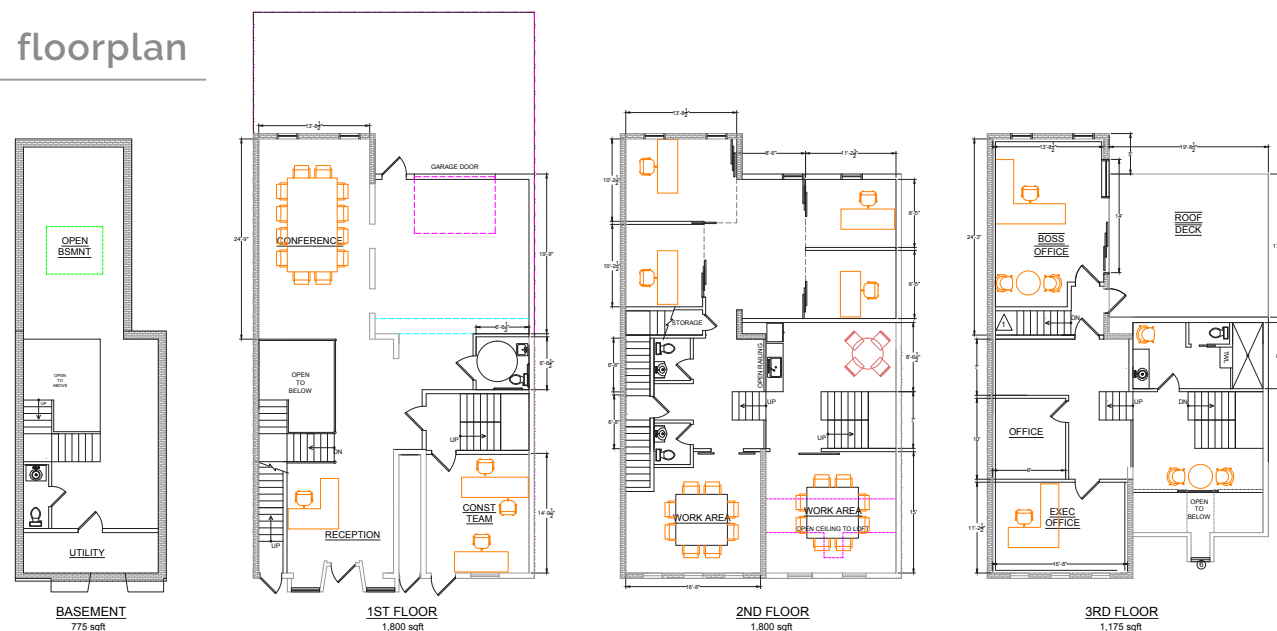
This property offers a high-end trophy space with natural lighting, architectural details, garage door features, and outdoor space. The available 5,600 SF of office space is spread across three floors with private offices, two conference rooms, and open communal areas, including a rooftop deck.

1511 Eastern Avenue is located in Fells Point, a waterfront neighborhood

known for its best in class restaurants, shops and bars. Small galleries, record stores, fashion boutiques, and eclectic restaurants line the cobblestone streets along the harbor and main square.

Tenants will be able to easily access multiple CityLink bus stops as well as bike-share hubs. I-895, I-83, I-95, and I-695 are all a quick drive from the property.

## floorplan



OFFICE SPACE

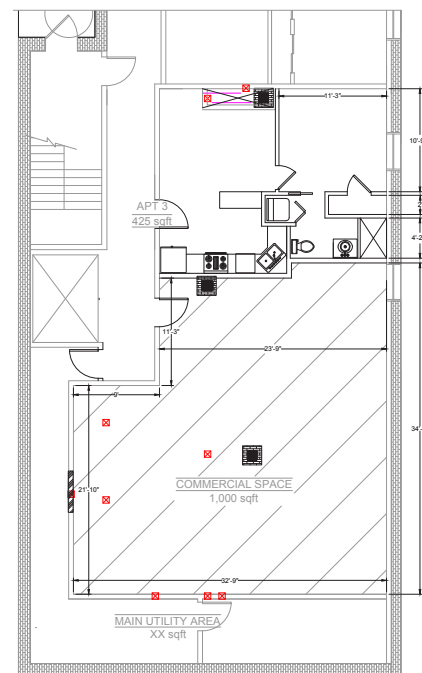
# 211 St Paul Pl

211 Saint Paul is located directly next to Mercy Hospital and the Clarence M. Mitchell, Jr. Courthouse. This property is also full of historic character with natural lighting, large windows, and authentic details.

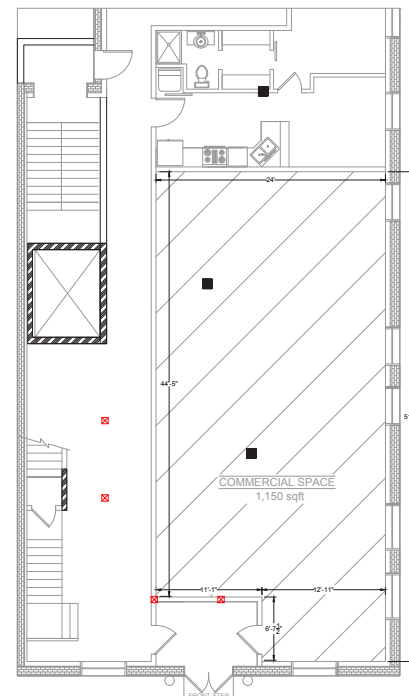
The 2,150 SF of office space is spread across two floors and ideal for an office user with an open floor plan.

211 Saint Paul is located in the Central Business district of Baltimore.

Tenants will be able to easily access multiple CityLink bus stops as well as bike-share hubs. I-895, I-83, I-95, and I-695 are all a quick drive from the property.



floorplan



2,150 sf  
OF OFFICE SPACE ON TWO FLOORS



HUGE WINDOWS,  
TONS OF NATURAL  
LIGHT

A BUILDING FULL OF  
**HISTORIC**  
CHARACTER AND CHARM,  
WITH MODERN AMENITIES

OFFICE/RETAIL SPACE

# 1709 Fleet Street

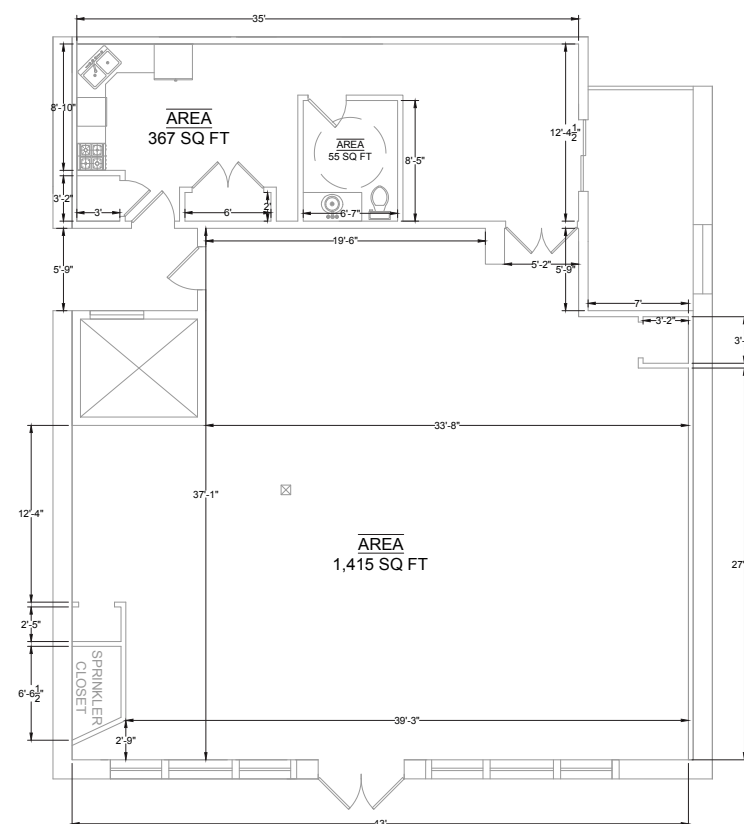
1709 Fleet Street is a modern, open-plan, retail space in Baltimore, Maryland.

This property offers a high-end trophy space with natural lighting, architectural details, 30 feet of store front on Fleet Street, and outdoor space. The available 1,837 SF of space has its own entry, large storefront windows, private breakroom, ADA Bathroom, and private outdoor patio.

1709 Fleet Street is located in Fells Point, a half a block east of the Broadway Market. Fells Point is a waterfront neighborhood known for its best in class restaurants, shops and bars. Small galleries, record stores, fashion boutiques, and eclectic restaurants line the cobblestone streets along the harbor and main square.

Tenants will be able to easily access multiple CityLink bus stops as well as bike-share hubs. I-895, I-83, I-95, and I-695 are all a quick drive from the property.

floorplan



30 ft  
OF STORE FRONT  
ON FLEET STREET

LOCATED  
HALF A BLOCK FROM  
BROADWAY MARKET AND  
ALL THAT FELLS POINT  
HAS TO OFFER!

# COMING SOON



## THE BRIXTON

## THE CAROLINE

**421 S Broadway St**

14 Executive Suites &  
Two 500 square foot ground  
floor retail space

**520 South Caroline St**

Two 1,000 square foot  
ground floor retail spaces

contact

**DREW PEACE**

Chief Business Development Officer

[drew@chasencompanies.com](mailto:drew@chasencompanies.com) | 443-447-0988

**REED MATSON**

Associate

[reed@chasencompanies.com](mailto:reed@chasencompanies.com) | 443-676-3375

**CHASEN**  
COMPANIES